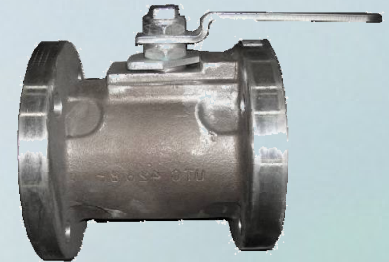
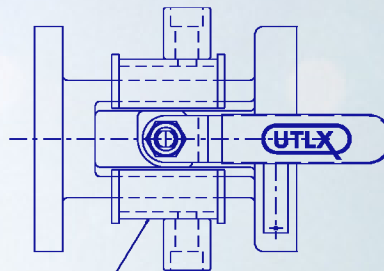




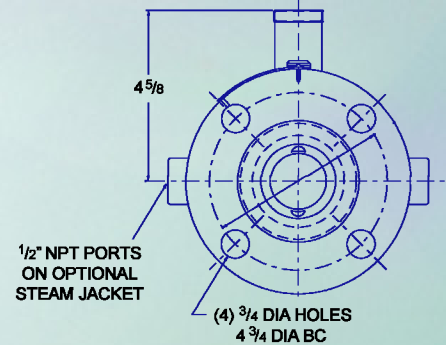
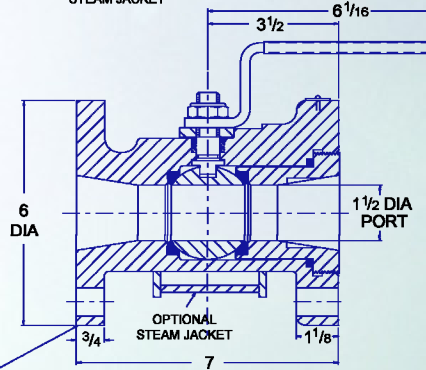
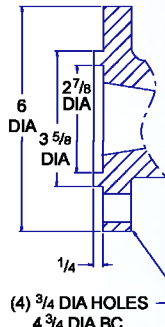
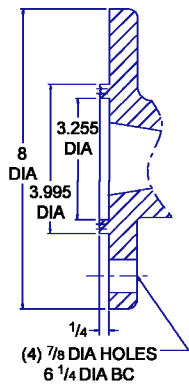
Flanged ball valves are used for top loading and unloading on either pressure cars or non-pressure cars. These valves are attached to the top fittings flange by one of 3 flanged mounting options; ANSI Raised Face (non-pressure cars only), ANSI Large Tongue & Groove or AAR Tongue & Groove. In all cases, the top side of the valve is supplied with an ANSI Raised Face flange. The valve is supplied complete with a handle.

UFFRR – 2" & 3" Flanged Valves

Valve Size: 2" or 3"
Port: Regular (Reduced)
Maximum Pressure: 500 psi
Maximum Temperature: 400°F
Mounting: Varies based on Flange.



2"

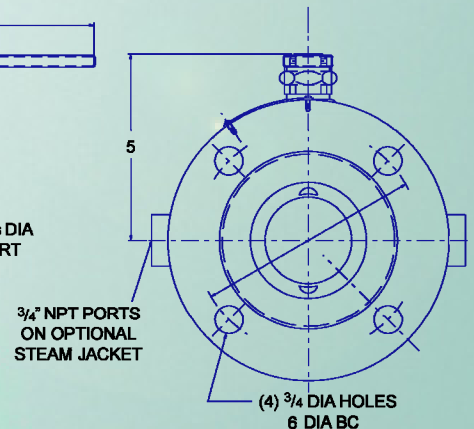
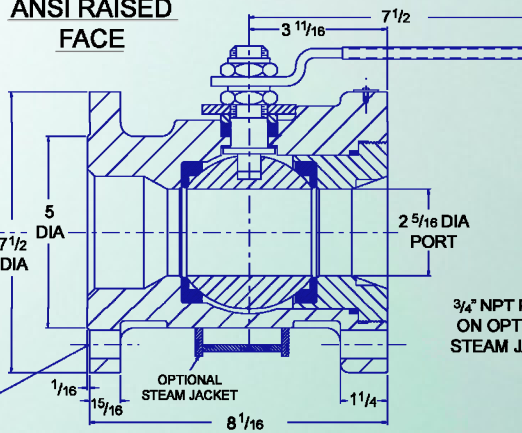
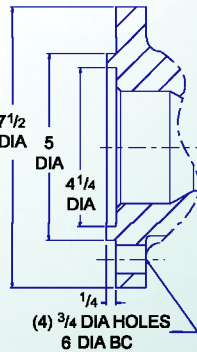
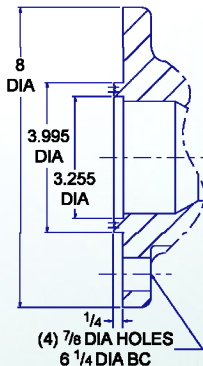


AAR TONGUE

ANSI TONGUE

ANSI RAISED FACE

3"





VALVE PART NUMBERS

DESCRIPTION	BODY RETAINER MATERIAL	MODEL#	MOUNTING	OPERATION	VITON "A"	BUNA "N"	EPDM	NEOPRENE FOOD GRADE
2" Flanged Ball Valve E-997058 A	CS	2" UFFRR 2236 TT	ANSI Raised Face	CW	088757-01	088757-02	088757-03	088757-04
				CCW	501603-01	501603-02	501603-03	501603-04
			ANSI Large Tongue	CW	094750-01	094750-02	094750-03	094750-04
				CCW	501619-01	501619-02	501619-03	501619-04
			AAR Tongue	CW	096178-01	096178-02	096178-03	096178-04
				CCW	501621-01	501621-02	501621-03	501621-04
	316 SS	2" UFFRR 3636 TT	ANSI Raised Face	CW	089099-01	089099-02	089099-03	089099-04
				CCW	501614-01	501614-02	501614-03	501614-04
			ANSI Large Tongue	CW	094748-01	094748-03	094748-02	094748-04
				CCW	501616-01	501616-02	501616-03	501616-04
			AAR Tongue	CW	096179-01	096179-06	096179-04	096179-07
				CCW	099009-01	099009-05	099009-04	099009-06
316 SS Tested	2" UFFRR 3636 TT	AAR Tongue	CW	501626-01	501626-02	501626-03	501626-04	
2" Flanged Ball Valve w/Steam Jacket E-997058 A	CS, SJ	2" UFFRR 2236 TT SJ	ANSI Raised Face	CW	089068-01	089068-02	089068-03	089068-04
				CCW	501613-01	501613-02	501613-03	501613-04
	316 SS, SJ	2" UFFRR 3636 TT SJ	ANSI Raised Face	CW	090263-01	090263-02	090263-03	090263-01
				CCW	501620-01	501620-02	501620-03	501620-04
3" Flanged Ball Valve E-997058 A	CS	3" UFFRR 2236 TT	ANSI Raised Face	CW	088745-01	088745-03	088745-04	088745-02
				CCW	501606-01	501606-02	501606-03	501606-04
			ANSI Large Tongue	CW	094749-01	094749-02	094749-03	094749-04
				CCW	501610-01	501610-02	501610-03	501610-04
			AAR Tongue	CW	096177-01	096177-02	096177-03	096177-04
				CCW	501623-01	501623-02	501623-03	501623-04
	316 SS	3" UFFRR 3636 TT	ANSI Raised Face	CW	089127-01	089127-02	089127-03	089127-04
				CCW	501607-01	501607-02	501607-03	501607-04
			ANSI Large Tongue	CW	094751-02	094751-05	094751-03	094751-04
				CCW	501628-01	501628-02	501628-03	501628-04
			AAR Tongue	CW	096180-02	096180-07	096180-05	096180-08
				CCW	501629-01	501629-02	501629-03	501629-04
316 SS Tested	3" UFFRR 3636 TT	AAR Tongue	CW	501627-01	501627-02	501627-03	501627-04	
3" Flanged Ball Valve w/Steam Jacket E-997058 A	CS, SJ	3" UFFRR 2236 TT SJ	ANSI Raised Face	CW	089073-01	089073-02	089073-03	089073-04
				CCW	501608-01	501608-02	501608-03	501608-04
	316 SS, SJ	3" UFFRR 3636 TT SJ	ANSI Raised Face	CW	090265-02	090265-05	090265-06	090265-04
				CCW	501615-01	501615-02	501615-03	501615-04

* The most commonly used 2" Flanged Valves are 096178-01, 089099-03 and 090263-03
The most commonly used 3" Flanged Valves are 096177-01, 089127-01 and 090265-06

REPAIR KITS

2" Flanged	UFFRR	Buna-N	501732-02
		EPDM	501732-03
		Neoprene, Food Grade	501732-04
		Viton® A	501732-01
		Viton® B	501732-05
		Viton® GF-S	501733-06
3" Flanged	UFFRR	Buna-N	501733-02
		EPDM	501733-03
		Neoprene, Food Grade	501733-04
		Viton® A	501733-01
		Viton® B	501733-05
		Viton® GF-S	501733-06

All dimensions are reference